



# **CISC Harbour House Marina Cruiser Series 2026**

## **Notice to Competitors**

**Number: 01**

**March 22 Long Distance Course posted**

**Source: Race Committee**

**Venue: CISC**

**Published: 2026-03-22 09:22**

---

**Notice:**

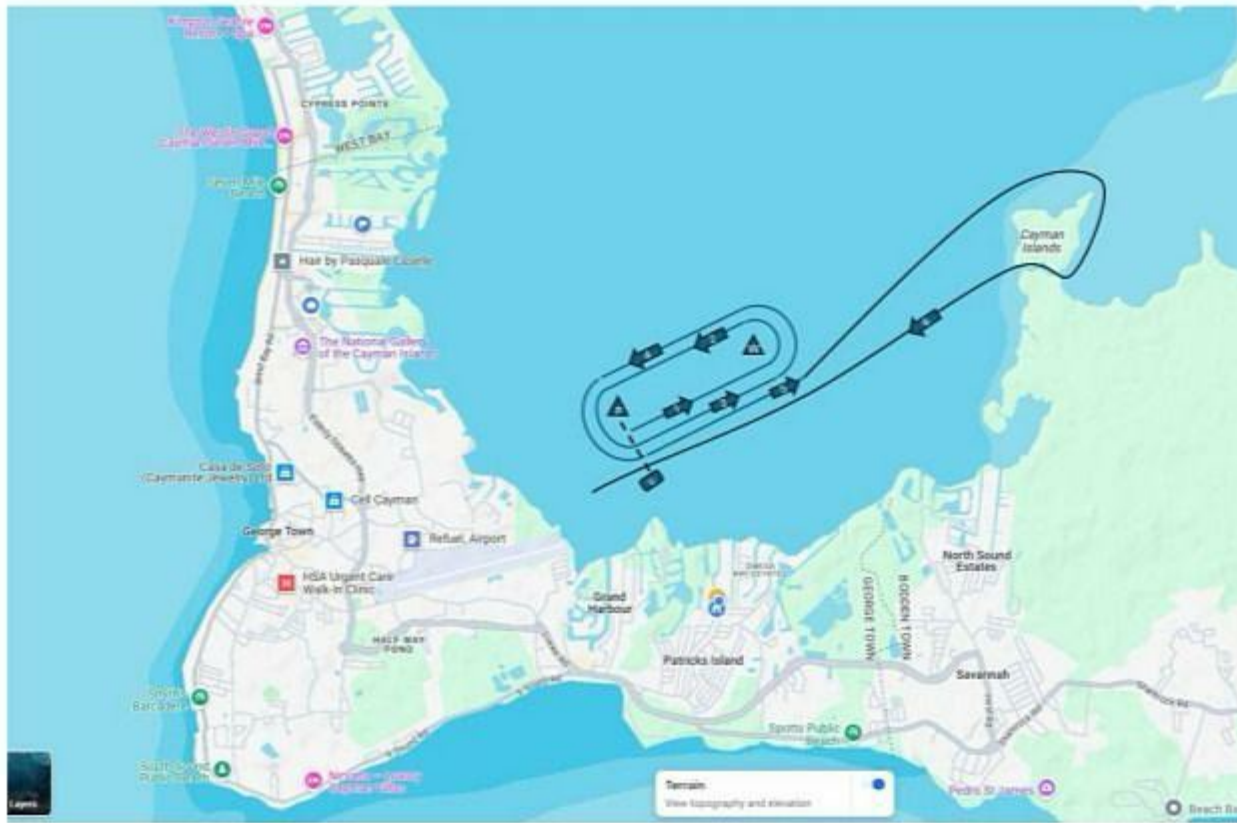
The long distance course for the March 22 race has been posted on the Official Notice Board

**Long Distance** indicated by a "B"Flag (red flag) flown from committee boat.



The course to be sailed as follows:

- Leg 1 - Start – Windward mark (W) – round to PORT
- Leg 2 - Pin mark (P) – round to PORT
- Leg 3 – Windward mark – Round to PORT
- Leg 4 – Pin mark – round to PORT
- Leg 5 – Windward mark – leave to PORT – round Booby Cay – round to STARBOARD
- Leg 6 – Finish between Committee Boat (C) and Pin mark



[fbc02dad-4b9b-4c15-8ab0-9a84a24c0da9.jpeg](#) 57.1 KB