

EDITION

PALMA VELA
REAL CLUB NAUTICO DE PALMA

SAILING INSTRUCTIONS

20º PALMAVELA
THE INSHORE RACE
OF PALMAVELA

**1 - 5 MAY
2024**

In all the rules governing this event, the notation **[NP]** denotes a rule that shall not be grounds for protests by a boat and the International jury may refuse to hold a hearing. This changes RRS 60.1(a)

The penalty for breaches of the sailing instructions indicated as **[SP]** will be established, without a hearing and set by the race committee or technical committee. However, the race committee or technical committee may protest a boat when they consider the standard penalty to be inappropriate. This changes RRS 63.1 and Appendix A5.

1. RULES

- 1.1 The regatta will be governed by the rules indicated in point 3 “Rules” of the Notice of Race and its amendments, if applicable.
- 1.2 **[NP][DP]** Due to safety reasons the use of aerial drones is absolutely forbidden in the club and its surrounding areas ((Reglamento de Ejecución UE 2019/947 and RD 1036/2017). The use of drones will be allowed in the racing areas only if they are in possession of the required authorisations and having registered at the Race Office before 10:00 hours on the day of operation. Any drone flown without authorisation and recognised by the Race Committee will be reported to the concerned authorities.
- 1.3 **[NP][DP]** All competitors and staff shall follow any reasonable instruction given by a race committee official or a member of the Organising Authority.

2. NOTICES TO COMPETITORS & CHANGES TO SAILING INSTRUCTIONS.

- 2.1 Notices to competitors will be posted on the Official Notice Board (ONB) on the website of the event: <https://www.palmavela.com/toa-virtual.php>
 These and any other notices may be posted when possible through Telegram channel, specially created for the occasion. A failure in the emission or reception of this publication will not be grounds for redress. (This changes RRS 62.1. (a)). To connect with this channel we invite you to use the following link: <https://t.me/regatapalmavela>
- 2.2 The Race office will be allocated next to the Real Club Náutico de Palma outdoor swimming pool (Appendix 4).
- 2.3 **[NP][DP]** All boats shall be equipped with a Marine VHF transceiver capable of operating with the channels established for the regatta and at least one device connected to internet and to the APP Telegram.
- 2.4 Any change to the sailing instructions will be posted on the Official Notice Board two hours before the warning signal on the day it will take effect, except that any change to the schedule of races will be posted before 20.00 hours on the day before it will take effect.
- 2.5 At sea, the race committee will broadcast and receive on the following channels:

AREA	VHF
ALFA	11
BRAVO	68
CHARLIE	71

3. SIGNALS MADE ASHORE

- 3.1 Signals made ashore will be displayed on the Main Flag Pole (MFP) located on the main terrace of the Club house by the swimming pool. (Appendix 4).
- 3.2 When code flag “AP” is displayed ashore, the words “1 minute” are replaced with ‘not less than 60 minutes’ in the race signal AP. This changes RRS Race Signals, AP.



4. SCHEDULE OF RACES, AREA ASSIGNMENT AND COMPETITION FORMAT

4.1 The intended programme and schedule of races is set out below, but the Race Committee reserves the right to change the schedule at its discretion, taking into account weather conditions or all other factors which may impact the fairness of the event and in accordance with S.I. 2.4

CLASS	2 OF MAY	3 OF MAY	4 OF MAY	5 OF MAY	Nº OF RACES	DISCARD
IMA Maxi	13.00 Race/s	13.00 Race/s	12.00 Race/s	12.00 Race/s	6	1
ORC		13.00 Race/s	12.00 Race/s	12.00 Race/s	5	1
ORC Double Handed Espirit of Tradition		13.00 Race	12.00 Race	12.00 Race	3	0
6M, Dragon		13.00 Races	12.00 Races	12.00 Races	6	1
J80 / J70		13.00 Races	12.00 Races	12.00 Races	9	1

The racing format (coastal or windward/leeward courses), the days' area assignment and the starting sequence for each class will be published on the Official Notice Board (ONB) before 20:00 hours of the day before it will take effect.

A maximum of 3 (2 for IMA Maxi, 6M and Dragon Class) windward/leeward races or one coastal race will be sailed per day.

The warning signal for a subsequent race on the same day, will be given as soon as possible. To alert boats that a race or sequence of races will begin soon, the orange starting line flag will be displayed with one sound at least 5 minutes before a warning signal is made.

The Race Committee will try to broadcast by VHF its intention to sail another race. A failure in the emission or reception of the broadcasting will not be grounds for redress. (This changes RRS 62.1 a).

On the 05/05/2024, no warning signal will be made after 15.30 hours.

5. RACING AREAS.

5.1 Races will be sailed in Palma Bay waters. Approximate position of centre is as follows.

AREA	POSITION	COLOUR
ALFA	39º 31,846 N- 002º 40,233 E	RED
BRAVO	39º 29,900 N- 002º 42,174 E	YELLOW
CHARLIE	39º 29,566 N- 002º 38,946 E	GREEN



5.2 [NP][DP] Boats sailing or crossing a non-assigned area will have to remain clearly separated from the boats competing and the official boats of that area.

6. COURSES & SHORTENED COURSES.

- 6.1 **Windward/leeward courses:** Appendix 1 shows the courses, including the course signals, the order in which the marks are to be passed or rounded, and the side on which each mark is to be left.
- 6.2 The leeward gate may be substituted by a single mark in this case the mark is to be left to port. This mark is not considered as a gate and RRS 18.4 applies.
- 6.3 **Coastal courses:** Appendix 2 shows the courses, including the marks definitions.
- 6.4 The position of the marks in Appendixs 1 and 2 are approximate. A different distance of the leg or bearing shall not be grounds for a request for redress. Nevertheless, in the previous and to the effects of the corrected time, the marks' real position will be considered when calculating the distance of the legs. (This changes RRS 62.1(a)).
- 6.5 No later than the warning signal the Race Committee will signal the course number (by displaying the corresponding numeral pennant) and the magnetic bearing and length of the first leg and will broadcast this information via VHF. Omission or failure in the emission or reception of that communication shall not be ground for a request for redress. (This changes RRS 62.1(a))
- 6.6 **SHORTENED COURSES:** Races may be shortened at any mark, except for the windward/leeward races, these shall have a minimum of 3 legs completed (two upwind and one downwind), excluding the leg from mark 1 the offset of each course. The time limit remains the same as for the original course.

7. MARKS

7.1 **Windward/leeward courses:**

Marks 1A, Offset A 2G	Marks 1B and Offset B	New mark	Starting marks	Finish marks
Inflatable orange	Inflatable yellow	Inflatable black (Course A) Inflatable red (Course B)	RC vessel and pin end boat or inflatable Red mark	RC vessel and a Buoy with a blue flag

7.2 **Coastal courses:**

Course marks	*Offset mark	Starting mark	Finish mark
See Appendix 2	Black (IMA Maxi) Red (Rest of classes)	RC vessel and pin end boat or inflatable Red mark	RC vessel and a Buoy with a blue flag

* **Offset mark:** if the committee displays a green or red flag before or together with the warning signal, this means that after passing the starting mark, yachts shall leave the windward mark either to starboard or port respectively, The Race Committee will show the bearing and distance to the mark.

8. THE START, CLASS FLAGS

8.1 Class flags

CLASS	FLAG
IMA Maxi	Code flag "O"
ORC 0	Code flag "W"
ORC 1	Code flag "T"
ORC 2	Code flag "R"
ORC 3	Code flag "K"
ORC 4	Code flag "V"
ORC 5	Code flag "Q"
ORC Sportboat	Code flag "F"
ORC A2	Code flag "G"
J80	Code flag "J"
6M- Dragon – J70	Class logo on white backgroug
Spirit of Tradition	Code flag "E"

[NP][DP] ORC and Spirit of tradition boats class flags shall be displayed on the backstay at least 1,5 meters above deck at all times, while racing, or on the stern pulpit if the boat does not have a backstay.

- 8.2 The starting line will be between the staff on the Race Committee boat at the starboard end of the line and the staff on the pin boat or an inflatable RED mark on the port end, both staff displaying an orange flag.
- 8.3 A boat starting later than four minutes after her starting signal will be scored did not start (DNS) without a hearing. This changes RRS A4 and A5.1.
- 8.4 In addition to RRS 29.1 & 29.2 individual and general recalls may be communicated by radio VHF. In such case, bow numbers, sail numbers or boat names may be called out for their identification. Delay in the radio communication of these calls, or the order in which they are made, or any omission or failure in the emission or reception of these, shall not be grounds for a request for redress. (This changes RRS 62.1(a)). This rule does not reduce, modify or exonerate each boat's responsibility to start in accordance with the RRS.
- 8.5 [NP][DP] Boats not racing and whose warning signal has not been made, shall avoid the starting area, which is defined as the rectangle covering an area of 200 metres to leeward and to windward of the starting line, and 100 metres outwards of each end of the line.

9. CHANGE OF POSITION OF THE NEW MARK AND CHANGE OF DISTANCE OF THE NEW LEG.

- 9.1 To change the next leg of the course, the race committee a) will lay a new mark, b) move the leeward gate or c) move the finish line. In case a new mark has been laid, the original one will be removed as soon as practicable.
- 9.2 In case of a change of course, to windward, the Offset mark will not be set.
- 9.3 Any change at the leeward gate or at the finish line will be announced at the offset mark.

Coastal races:

- 9.4 A Race Committee boat close to a mark that has to be rounded, displays code flag C and makes repeated sound signals, this means that after rounding the mark: "All boats must proceed from this marker directly to the finish line to finish without passing or rounding the other markers established on the course". (this changes RRS 28 and 33).

10. THE FINISHING LINE.

- 10.1 The finishing line will be between a staff on board the Race Committee boat and a buoy, both displaying a blue flag.
- 10.2 **[NP][DP]** When crossing the finishing line after the sunset, or in poor visibility conditions, every boat shall highlight her sail number or bow number with a powerful torch and shall identify herself to the race committee by radio VHF until it has been recognised.

11. PENALTIES.

- 11.1 RRS 44.1 is changed so that only one turn is required instead of two turns.
- 11.2 **[NP][DP]** A boat that accepts a penalty or has retired in accordance with rule 44.1, must complete an online acknowledgment filling out an infringement form before the protest time limit. For the form, please see link: https://www.racingrulesofsailing.org/penalty_reports/new?event_id=8008

12. TIME LIMITS.

Time limits will be as follows:

- 12.1 **IMA Maxi and Spirit of Tradition:** The time limit for each boat is calculated as follows:

TL = 2.50 x M x BSF (For races <= 6 miles)

TL = 2.35 x M x BSF (For races between 6 and 13 miles)

TL = 2.15 x M x BSF (For races > 13 miles)

TL: Time limit in seconds.

M: Distance in real miles with two decimals.

BSF= 5300 / (TCCx10) - 1.75

- 12.2 **ORC:**

The time limit for each boat is calculated as follows

$1,2 * [(UP6 + D6)/2] * M.$

- 12.3 **One design:**

Time limit will be of 70 minutes (J80 – J70), 90 minutes (Dragon, 6M) for the first boat. A boat that has not finished within the 15 minutes after the first boat to have sailed the course and finished of her class, will be scored “Did not finish” (DNF). (This changes rules 35, A4 and A5).

- 12.4 For the classes competing on corrected time, those boats who finish after the time limit will be scored DNF, this changes RRS 35, A4 and A5.

13. BOAT THAT RETIRES (RET), ABANDONS (DNF) OR DOES NOT SAIL THE STARTING LINE (DNC). **[NP][DP]**

- 13.1 A boat that retires (RET) shall lodge a retirement form at the race office within the protest time limit.
- 13.2 A boat that abandons the racing area (DNF) at any moment shall inform the race committee by any means and shall inform the race office within the protest time limit.
- 13.3 A boat that does not leave the harbour and does not sail to the starting line for the races of the day (DNC) shall inform the Race Office as soon as possible.

14. HEARING REQUESTS.

- 14.1 Hearing request forms are available on the virtual race office. Protests and requests for redress or reopening shall be delivered there within the appropriate time limit. https://www.racingrulesofsailing.org/protests/new?event_id=8008

- 14.2 Protest time limits for each class are as follows:
For the One Design classes, 90 minutes after the last boat in the last race of the day finishes or the Race Committee signals no more racing for the day, whichever is later.
For the rest of the classes, 90 minutes after the protesting boat finishes or or the race committee signals no more racing today, whichever is later.
- 14.3 Notices will be posted no later than 30 minutes after the end of the protest time limit, to inform competitors of hearings in which they are parties or named as witnesses. Hearings will be held in the Jury rooms and implicated parties will have to remain available.
- 14.4 For the purpose of RRS 64.4 (b) the authority is the RFEV Race Officials Committee.
- 14.5 Decisions of this International Jury will be final as provided in RRS 70.5

15. SAFETY REGULATIONS. [NP][DP]

- 15.1 In an emergency, boats requiring assistance should call the Race Committee on VHF area channel assigned (S.I. Appendix 6 On water Emergency Procedures).
- 15.2 While racing, only crew members appearing on the crew list provided by the boat during registration or any authorized change thereafter, shall be carried on board.
- 15.3 All boats shall only return to their allocated moorings.
- 15.4 Boats arriving for any reason at a point ashore other than the ones or that cannot reach the harbour on their own are requested to report immediately to:
- Real Club Náutico de Palma Telephone: 00 34 971 726848 VHF 9
 - Safety coordinator Telephone: 00 34 605825462 VHF 72
- 15.5 To facilitate the evacuation of an injured crew member, boats are requested to signal their position to the rescue services by using an orange smoke canister or a red or white hand flare.
- 15.6 All competitors shall carefully comply with this sailing instruction **15. SAFETY REGULATIONS**. Otherwise they can be requested to pay the expenses of search and rescue operations

16. SCORING

The total score of each boat will be the overall sum of its results in each race, discarding the worst result when four or more races have been sailed. ORC A2 and Spirit of Tradition classes will have no discard.

17. REPLACEMENT OF CREW. [DP]

Changes to crew list (adding new crew members, replacing or disembarking crew members) shall be made in writing to the Race Committee indicating the name and I.D. or Passport number of the substitute crew member and shall be lodged at the race office before 10:30 hours of each day, but in case of emergency, it can be communicated at the first reasonable opportunity, and in any case, within the protest time limit.

Only substitutions approved by the Race Committee will be accepted. Substitutes may be subject to weight control.

The substituted crew member shall not be aboard on any other competing boat throughout the remainder of the regatta.

18. OFFICIAL BOATS IDENTIFICATION.

- 18.1 The official boats will be identified by displaying flags as follows:

Race Committee	Colour Area flag
International Jury	White flag with a "J"
Technical Committee	White flag with a "M"
Media and Auxiliary	White flag with Press

19. SUPPORT BOATS. [NP][DP]

Support boats must be identifiable as to which the participating yacht they support. They shall stay outside of the safety zone (as defined in appendix 3) from the time of the preparatory signal for the first start until all boats have finished or the race committee signals a postponement, general recall or abandonment.

All support boats must register at the race office during the registration confirmation period.

20. HAUL-OUT RESTRICTIONS. [NP][DP]

Boats shall not be hauled out after 18.00h of the previous day of the first warning signal, except with and according to the terms of prior written authorisation of the race committee.

21. TRASH DISPOSAL.[DP]

Boats shall not put trash in the water. Trash may be placed aboard support boats and then disposed in the containers on land.

22. MEASUREMENT AND EQUIPMENT INSPECTIONS. SAIL NUMBERS AND TRACKING DEVICE. [NP][DP]

22.1 On the water, a boat can be instructed by a Technical Committee measurer to proceed immediately to the measurement inspections area.

22.2 Once the provisional results of the day have been published for the first time, the Technical Committee will publish on the ONB the list of boats to be inspected.

The boat's representative shall come to the Principal Measurer immediately, to be assigned a measurement inspection time and place.

The boat's representative is committed to check whether his boat has been listed for measurement control.

22.2.1 MEASUREMENT INSPECTIONS

- Afloat: at the finishing line, before or straight after races, without previous notice on the Official Notice Board (ONB)
- Ashore: after finishing the last race of the day, the boats required to remain at the disposal of the measurement committee, will be published on the ONB.
- The boats will be selected as follows:
 - a) Boats in each group or division selected by Technical Committee, and the first boat of the overall classification in each group or division.

22.2.2 The following measurement inspections may be performed:

- a) Before the start of the races,
 - Under consideration of the Technical Committee (ORC)
 - One design, sails stamping and crew weighing.
- b) At the finishing line or during the races (without previous notice on the ONB)
 - Crew checks
 - Sail inventory and sails stamp checks.
 - Heavy items and safety declarations checks.
 - The measurer may seal under its criteria, any part or element of the boat, which may be controlled ashore after being published on the ONB.
 - Safety checks.

- c) Ashore: at the measuring area with previous notice on the Official Notice Board.
- Sail checks.
 - Rig checks.
 - Freeboards and overhangs checks (ORC)
 - One design: crew checks (I.D.)
 - Boat weight and/or inclining (if applicable)

22.3 At least two crew members and the boats representative shall be present during the measurement checks. all measurements, while been carried out, shall have two readings: measurers and owner or his representative.

22.4 The boats will register and use the sail number indicated in its Valid Measurement Certificate, unless written authorisation has been given by the Principal Race Officer.

22.5 **[SP]** A tracking and/or positioning device shall be installed on each of the boats participating in the coastal races. The crew shall collaborate with the installation and proper functioning during the regatta, for which appropriate instructions will be given upon receipt of the device at the Race Office.

The assignment of the Classes that shall collect and install the tracking device for each day will be published on the Official Notice Board (ONB) before 20.00 hours of the day before it will take effect together with the racing format.

Boats not complying with this instruction shall be penalized without a hearing by the Race Committee with a penalty of 1 point in the most recently completed race, applied as indicated in rule 44.3 c) RRS (This changes rule 63.1 of the RRS).

23. PRIZES.

The prize list will be posted on the Official Notice Board (ONB).

24. DISCLAIMER OF LIABILITY.

All those taking part in the regatta do so at their own risk and responsibility. See RRS 3 Decision to Race.

The organizing authority and all parties involved with the organization of the event will not accept any liability for material damage or personal injury or death sustained in conjunction with or prior to, during, or after the regatta.

25 LOCAL MARINE REGULATIONS [NP]

The Real Decreto 62/2008 states the conditions of maritime safety, navigation and life at sea applicable to nautical sports events.

Competitors are alerted that boats can only participate if they are dispatched in accordance with the administrative regulations for navigating the waters where the race will be sailed.

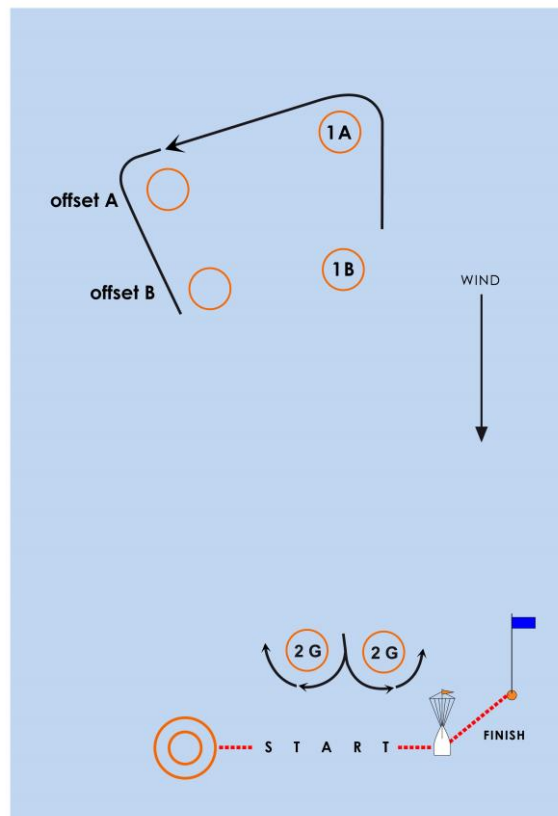
Competitors must declare, with adequate prior to the beginning of the event, the insurances subscribed to participating in nautical sports events, including the risks covered and the liability limits as required in the Notice of Race.

The Real Club Nautico de Palma informs all participants that it holds a third-party liability insurance policy of 6.000.000 euros. It is each boat's responsibility to be in possession of the complementary insurances it deems convenient, besides the requirements of Rule 6.10 b) of the Notice of Race

APPENDIX 1. WINDWARD/LEEWARD COURSES

COURSE A (Code Flag Pennant 1): Start – 1A – Offset A – 2G – 1A – Offset A – Finish.

COURSE B (Code Flag Pennant 2): Start – 1B – Offset B – 2G – 1B – Offset B – Finish.

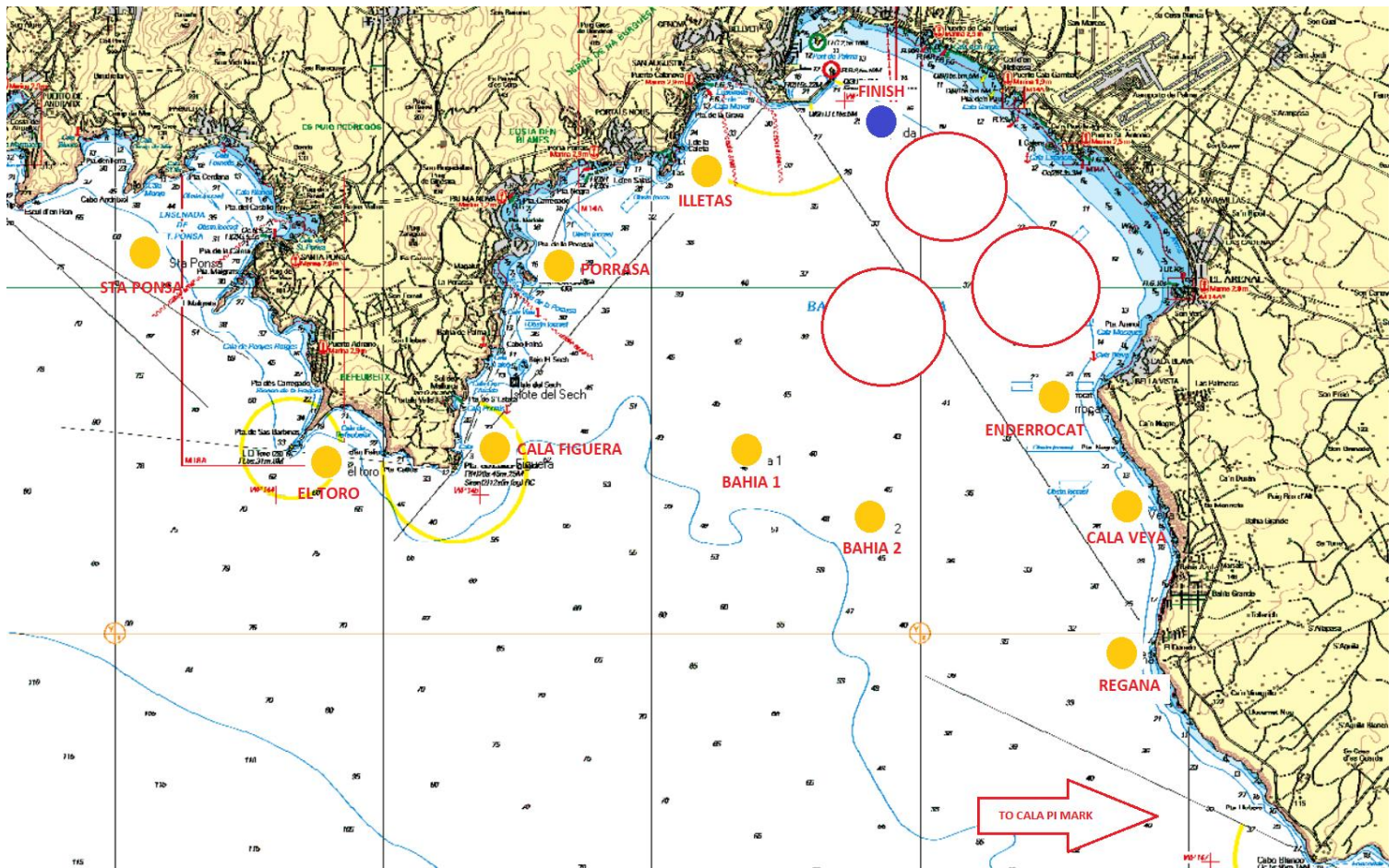


- Except at a Gate all course marks shall be left to port. When at the gate there is only one mark this one shall be rounded to port (SI 6.2).
- Distance between Race Committee and mark 1A and 1B: see S.I.6.5.
- Distance between starting line and gate: 0.2 Nm approx.
- Distance between mark 1A or 1B and mark offset A or offset B: 0.1 Nm approx.
- Angle between mark 1A or 1B and mark offset A or offset B: 100°
- Distance between gate marks: 10 boat lengths.
- Distance between committee boat and finishing mark: 150 m approx.
- The bearing to the windward mark and right side of the gate (when looking from leeward to windward) will be considered from Race Committee.

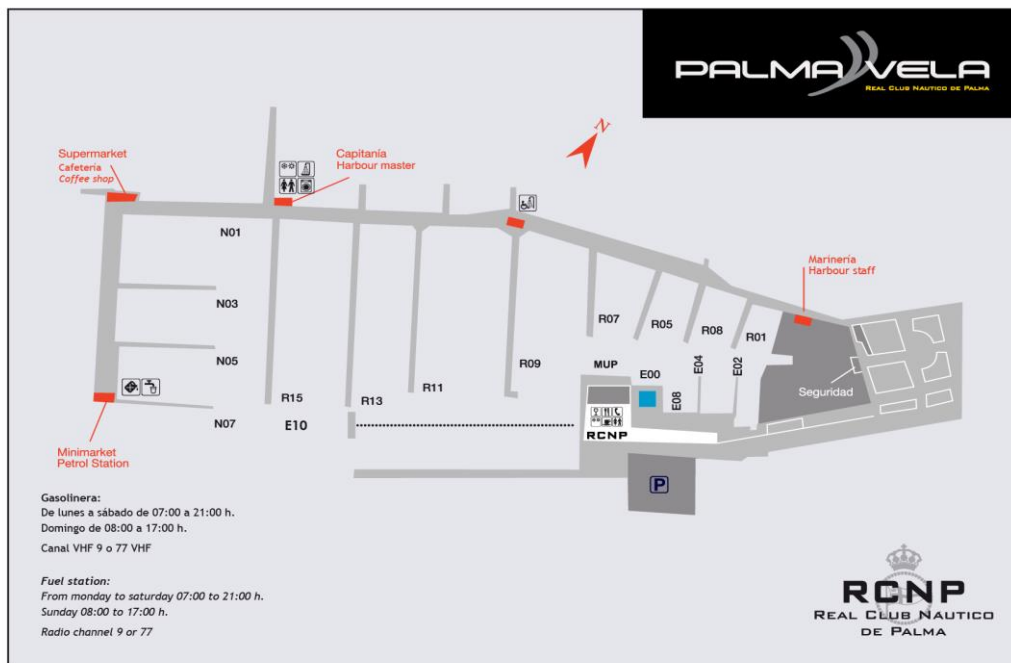
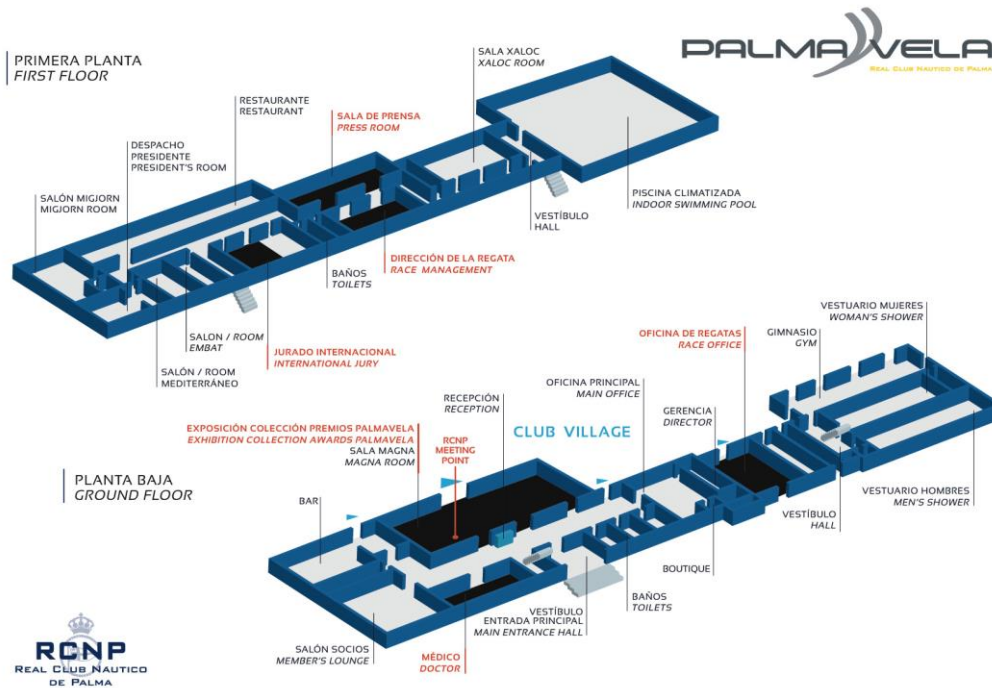
Note: This drawing is a schematic. The distances and mark positions are not to scale. This information is approximate. A different distance of the leg or bearing shall not be grounds for a request for redress.

APPENDIX 2. COASTAL COURSES.

MARK INFORMATION



APPENDIX 4. FACILITIES.



APPENDIX 6. EMERGENCY PROCEDURES AT SEA

Organizing Committee has established these emergency procedures to provide assistance in the event of an emergency at sea, including injuries requiring medical assistance. We also have emergency numbers in case there is an accident or injury on shore.

1. Contact the Race Committee immediately on the VHF channel in the assigned area or by cell phone to the safety coordinator +34. 605 825 462.
2. Identify your boat, the nature of the emergency (type of injury, number of people injured), and the position of your boat.
3. The Race Committee will alert the safety boats on the water and may direct you to another VHF channel or mobile phone for further communication.
4. Proceed at best speed to a designated meeting point as directed.
5. Depending on the nature and severity of the injury, should this be the emergency, safety boat personnel may come aboard your boat to administer aid, evacuate the injured party and/or re-direct you for transfer of the injured person.
6. You are asked to cooperate fully with the Race Committee, Maritime Rescue Authorities and emergency personnel.

Please take the time to review these procedures with your crew prior to the race.

EMERGENCY AND MEDICAL NUMBERS

Real Club Náutico de Palma	+34.971 72 68 48	VHF 77/72/09
Race Committee		ALFA VHF 11 BRAVO VHF 68 CHARLIE VHF 71
Safety coordinator at sea	+34 605 825 462	VHF 72
Safety coordinator at shore	+34 629 923 996	VHF 09
Maritime Safety Coordination Centre	+34.971.72.45 62 900 202 202	VHF 10 / 16
Spanish Central Emergencies Response	112	

20th EDITION

PALMA VELA

REAL CLUB NAUTICO DE PALMA



BALEARIA



azulmarino



Martín Códax



OK mobility



TRUEWORLD



Instagram Facebook Twitter @rcnpalma

#compromisoRCNP

PALMAVELA.COM